

SUNKIT 2000

PORTABLE SOLAR GENERATOR

A **reliable, flexible** and **powerful** portable solar solution that brings affordable clean energy to anyone, anywhere.

RELIABLE

Power when you need it, without having to refuel

FLEXIBLE

Replace and upgrade every component for long-term value & connect to any commercial solar panel 500-2,000 Watts

POWERFUL

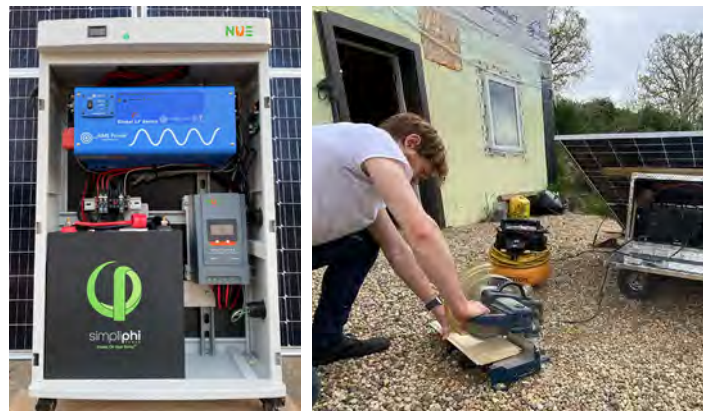
Power virtually any 120v appliance, from refrigerators to cell phones, while simultaneously charging from solar

PORTABLE, FAST SET-UP

Quick and easy to transport, set-up and take-down

SUSTAINABLE

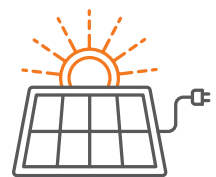
Upgradeable and repairable, can also utilize repurposed components, supporting a circular economy



The **SunKit** is a quick-to-deploy solar alternative to a small portable generator. Designed to use any commercial solar panel, it can accommodate an array of power inputs (1 to 6 panels) to allow a range of electrical loads. Built to last, every component of the **SunKit** can be swapped, upgraded or serviced in the field.

Uses:

- Emergency Response
- Residential Backup Power
- Communications
- Off-grid Medical Facilities
- Events
- Evacuation Centers
- Remote Locations
- Worksites
- RVs & more



CLICK TO CONTACT US TODAY



NEW USE ENERGY SOLUTIONS, INC. • newuseenergy.com • sales@newuseenergy.com

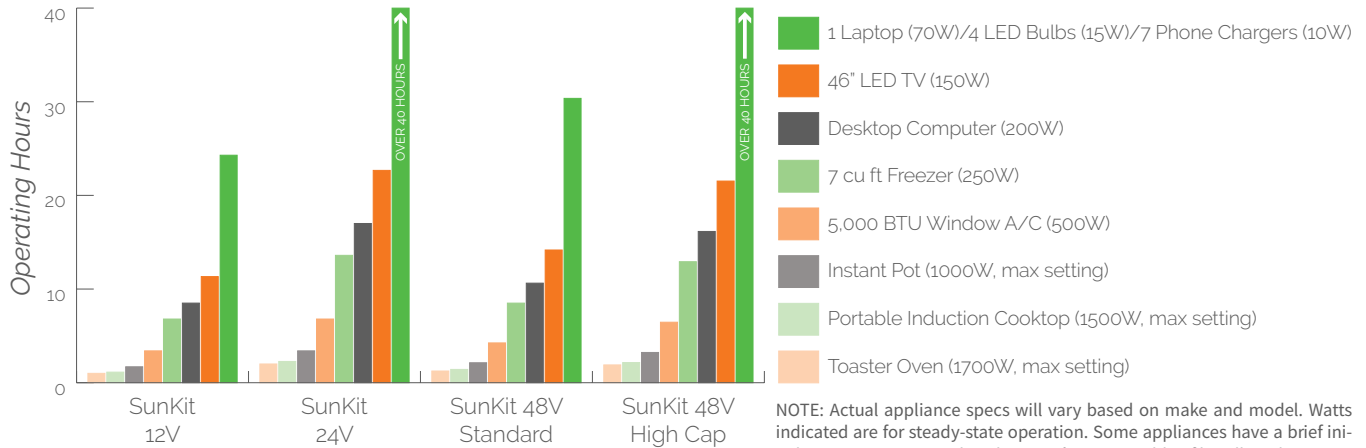
941 S. Park Lane, #118, Tempe AZ 85281 • +1 202 222 0992

/newuseenergy [in](#) [f](#) [ig](#) [t](#) [v](#)

SUNKIT 2000

PORTABLE SOLAR GENERATOR

WHAT DOES IT POWER?



SPECIFICATIONS

SunKit Version	SunKit 2000 12V	SunKit 2000 24V	SunKit 2000 48V Standard	SunKit 2000 48V High-capacity
120V AC Pure Sine Wave Inverter	2000W Continuous; High Frequency	2000W Continuous Low Frequency	2000W Continuous Low Frequency	2000W Continuous Low Frequency
Battery Type	LiFePO4	LiFePO4	LiFePO4	LiFePO4
Storage Capacity (kWh)	2.0	4.0	2.5	3.8
DC Nominal Voltage	12V	24V	51.2V	51.2V
20 Second Surge Rating	4000W	6000W	6000W	6000W
Solar Charge Controller	40A MPPT, 100VDC MAX	40A MPPT, 150VDC MAX	40A MPPT, 150VDC MAX	40A MPPT, 150VDC MAX
AC Charger	Optional	Included	Included	Included
12V DC Output	YES	Optional	Optional	Optional
PV Input Range	up to 520W DC	up to 1,000W DC	up to 2,000W DC	up to 2,000W DC
Battery Voltage Range (BMS Settings)	8.5V Low Voltage Shutdown; 14.8V Overcharge Protection	19.6V Low Voltage Shutdown; 29.2V Overcharge Protection	40.0V Low Voltage Shutdown; 58.4V Overcharge Protection	40.0V Low Voltage Shutdown; 58.4V Overcharge Protection
Storage Temperature Range	-20 °C - 35 °C	-20 °C - 35 °C	-20 °C - 35 °C	-20 °C - 35 °C
Operating Temperature Range	0 °C - 55 °C	0 °C - 55 °C	0 °C - 55 °C	0 °C - 55 °C
Environmental Relative Humidity Range	10 - 90%	10 - 90%	10 - 90%	10 - 90%
Battery Cycle Life Estimates @DOD	6,000+ @ 80% DOD; 8,000+ @50% DOD	6,000+ @ 80% DOD; 8,000+ @50% DOD	6,000+ @ 80% DOD; 8,000+ @50% DOD	6,000+ @ 80% DOD; 8,000+ @50% DOD
Weight	50kg; 110lbs (approx)	91kg; 200lb (approx)	73kg; 160lb (approx)	84kg; 185lb (approx)
SunKit Enclosure Dimensions	38.75"H x 24.25"W x 11.25"D (984mm x 616mm x 286mm)	38.75"H x 24.25"W x 11.25"D (984mm x 616mm x 286mm)	38.75"H x 24.25"W x 11.25"D (984mm x 616mm x 286mm)	38.75"H x 24.25"W x 11.25"D (984mm x 616mm x 286mm)
Warranty	1-YEAR LIMITED MANUFACTURER'S WARRANTY			
Disclosures & Warnings	<p>Flames or high heat are dangerous with Li-ion; do not use around flames or at temperatures higher than 60C. SunKit enclosures should not be stored or used in direct sunlight. Enclosures should be shielded by panels and/or stored in shade.</p> <p>DO NOT disassemble the battery. DO NOT use a battery with scar or deformation. DO NOT puncture or open battery cells. If SunKit is dropped or damaged, do not use -- consult with a professional to ensure no danger exists.</p> <p>*Prices, terms and specifications are subject to change at the sole discretion of New Use Energy.</p>			



NEW USE ENERGY SOLUTIONS, INC. • newuseenergy.com • sales@newuseenergy.com

941 S. Park Lane, #118, Tempe AZ 85281 • +1 202 222 0992

/newuseenergy